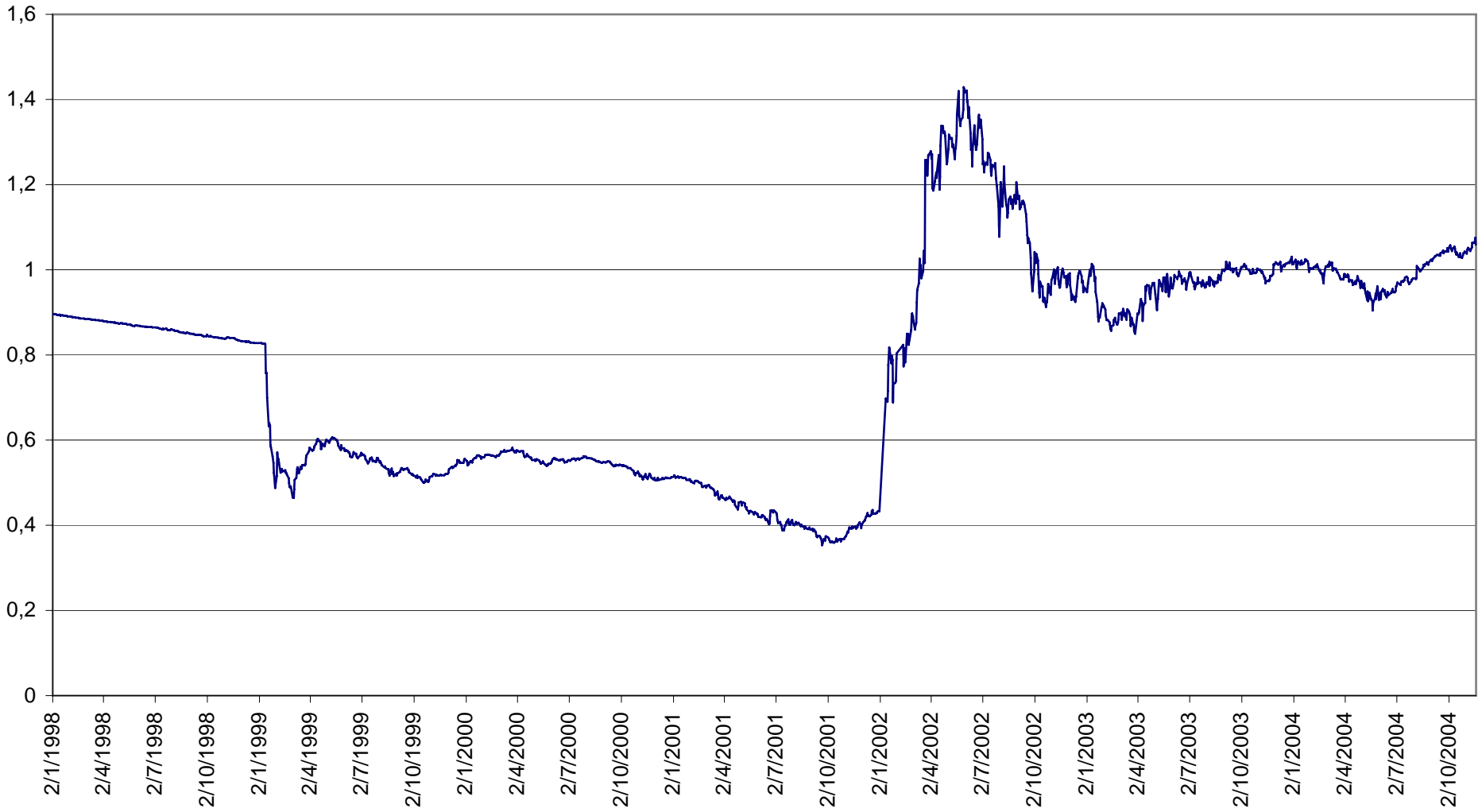


# **Fundamentos e Restrições para a Cooperação Macroeconômica no Mercosul**

**Francisco Eduardo Pires de Souza**  
**Instituto de Economia da UFRJ**

## Taxa de Câmbio R\$/Peso Argentino



**Table 10: contemporaneous correlation between the terms of trade, export price and import price of *Mercosur* countries. Source data: ECLAC 2002 Statistical Yearbook.**

Countries	Terms of trade	Export-Export	Import-Import	Export-Import*	Import-Export**
Brazil and Argentina	0.24	0.69	0.34	0.44	0.20
Brazil and Paraguay	0.02	0.42	0.57	0.13	0.46
Brazil and Uruguay	0.34	0.74	0.49	0.54	0.17
Argentina and Paraguay	0.53	0.68	0.30	0.37	0.21
Argentina and Uruguay	-0.01	0.56	0.49	0.67	0.41
Uruguay and Paraguay	0.32	0.58	0.70	0.53	0.16

\* Export price of the first country and import price of the second country in the row name. \*\* Import price of the first country and export price of the second country in the row name.

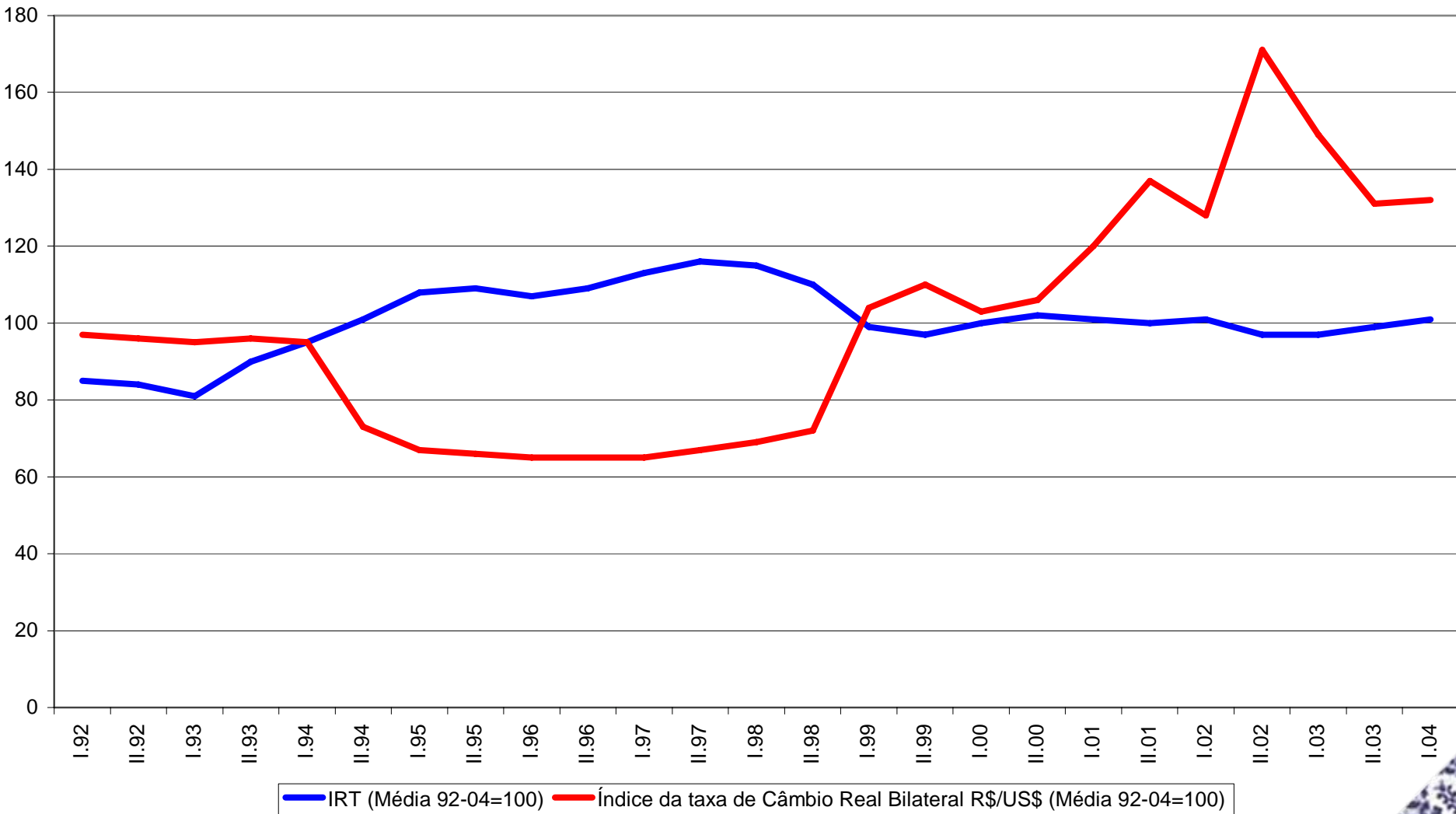
## Taxas de Câmbio R\$/US\$ e Peso Argentino/US\$: Convergência e choques idiossincráticos



## Taxa de Câmbio Nominal R\$/US\$



### Taxa de Câmbio Real e Relações de Troca



### Taxa de Câmbio Real e Influxo de Capitais

